



PUBLIC SUMMARY REPORT

TRACEABILITY TO PLANTATION ASSESSMENT

Name of Parent Company: Eng Hong Palm Oil Mill Sdn Bhd

Name of Palm Oil Mill: Eng Hong Palm Oil Mill Sdn Bhd

Mill MPOB License No.: 500085104000

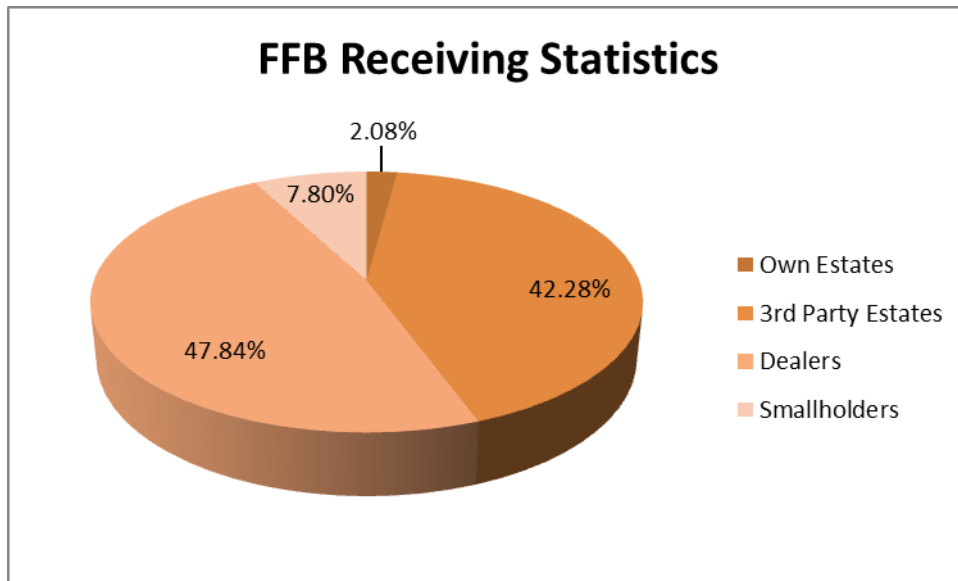
Mill Address: 250, Jln Sg. Buaya, Kg. Sg. Buaya, 42700 Banting, Selangor

GPS Coordinate of Palm Oil Mill: 2.85989, 101.47604

Supplied Mewah’s Refineries: Mewah-Oils Sdn Bhd (Port Klang)

Assessment Date: 9th August 2018 (Thursday)

A. Fresh Fruit Bunch (FFB) Traceability:



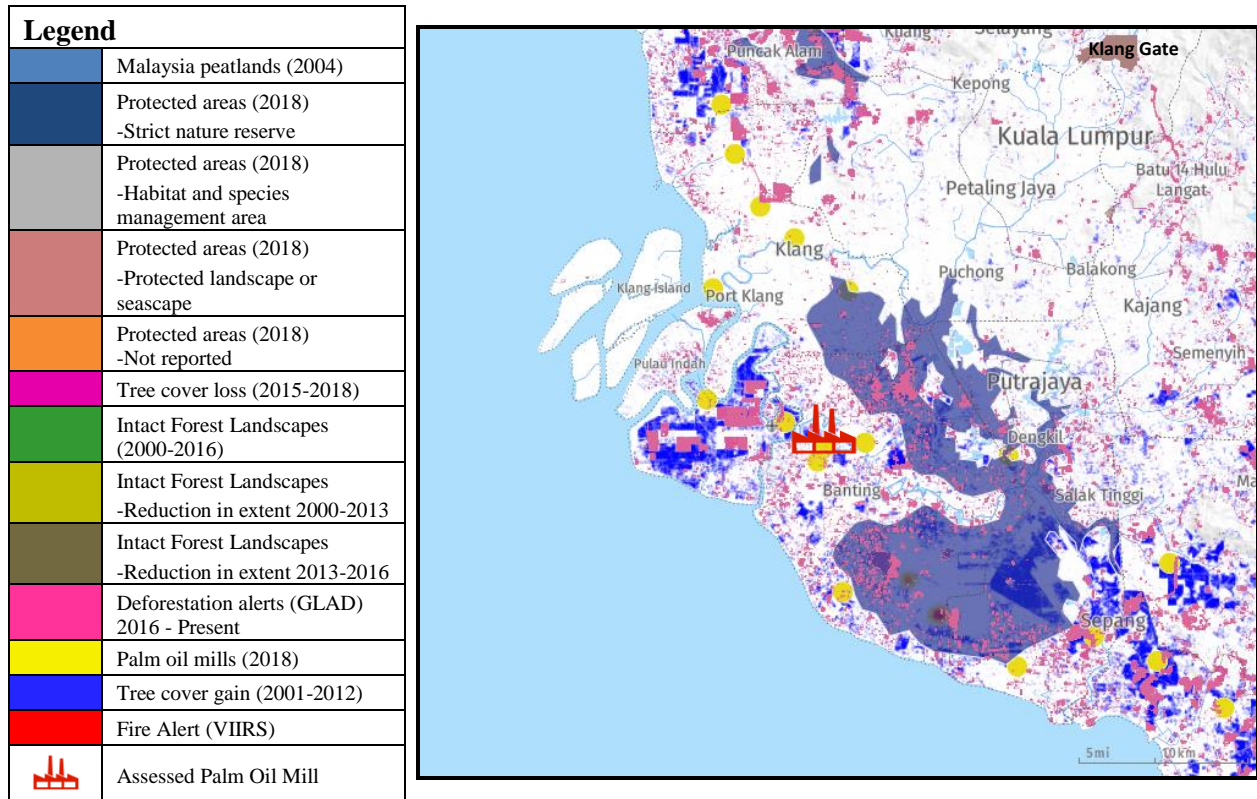
| FFB Sources | Traceability Score | Overall TTP Score % |
|--|--------------------|---------------------|
| Own Plantations/ Estates | 100% | 100% |
| 3 rd Party Plantations/ Estates | 100% | |
| Dealers | 100% | |
| Smallholders | 100% | |

B. Environmental Risk Analysis

1. Environmental risk assessment is carried out within the theoretical FFB catchment area (50 km radius) in Eng Hong Palm Oil Mill Sdn Bhd using Global Forest Watch (GFW) tool.
2. The overall environmental risk ranking of Eng Hong Palm Oil Mill Sdn Bhd is summarized as follows.

| Potential Environmental Risks | | | | | | |
|-------------------------------|-----------------------------------|---|-------------------------|-----------------------------------|--------------------------------------|---------------|
| Rate of Tree Cover Loss | Tree Cover Loss on Primary Forest | Potential Future Loss in Primary Forest | Tree Cover Loss on Peat | Tree Cover Loss on Protected Area | Tree Cover Loss on Carbon Dense Area | Fire Activity |
| Low | Low | Low | Medium | Low | Low | Medium |

The following mapping is used as an indicator to indicate the potential environmental risks of the assessed palm oil mill.



C. Social Impact Assessment

1. We also carried out social impact assessment during the mill assessment.
2. The mill representatives were made to understand the important pillars of good social responsibility practices, mandatory compliance of national labour laws & human rights, and the needs to improve social engagement with local community.

The findings of the social impact assessment are outlines in the following table:

| | |
|---|-----|
| Respect of Workers & Local Community Right | Yes |
| Compliance with Safety & Health | Yes |
| Compliance with National Labour Laws and Regulations | Yes |
| Compliance with Housing & Amenities Act 1990 | Yes |
| Respect of FPIC | Yes |
| CSR/Community Contribution | Yes |
| Availability of grievance mechanism | Yes |
| Fair & Equitable Trading | Yes |

Disclaimers:

The traceability to plantation assessment is carried out through observation, documentation reviews and interview based on Mewah's Sustainable Palm Oil Policy and Mewah's Supplier Assessment Guidelines. The above findings are collected through multiple sampling methodologies during the assessment date.

The information contained in this report may contain confidential, proprietary, privileged and/or private information. It is only intended for the users of Mewah Group Sustainability Dashboard.